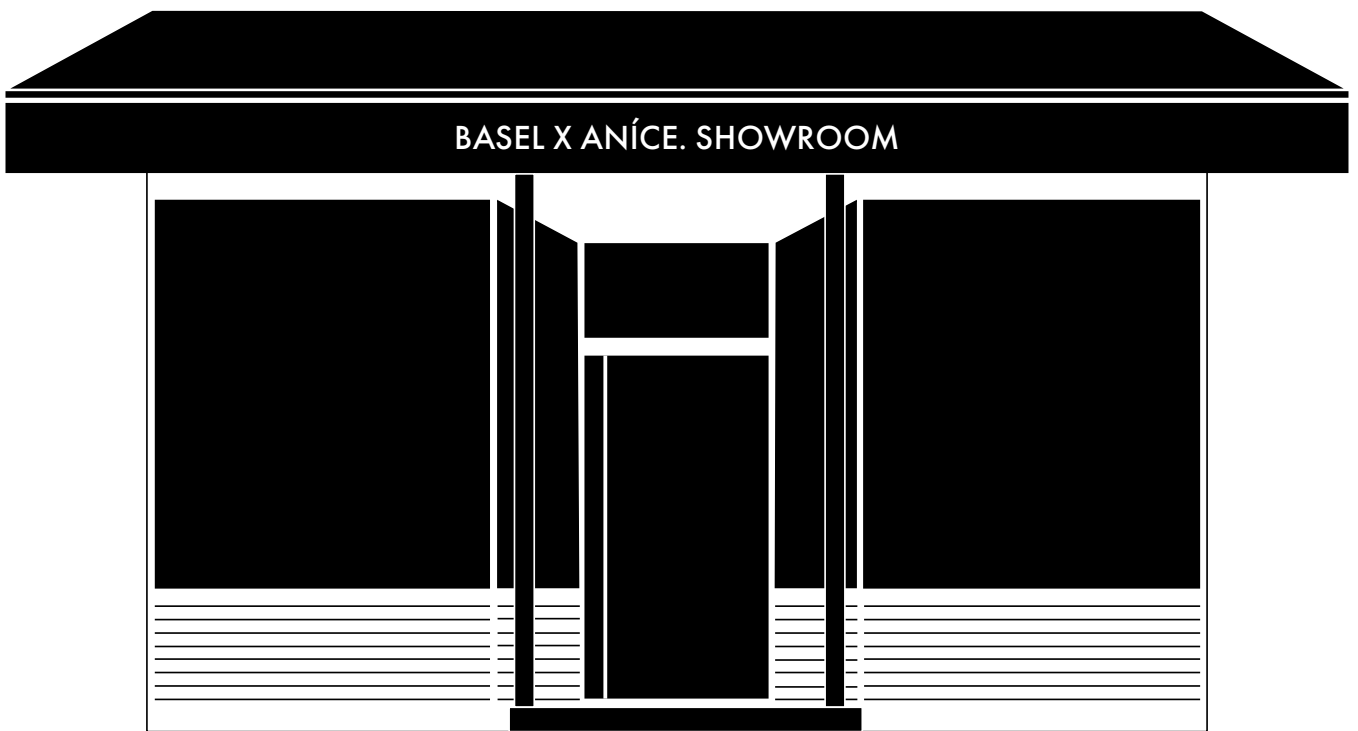


Anice.



Theresienstraße 13  
80333 München Maxvorstadt

03 **Factsheet**

04 **Prices / Services**

05 **Floorplan** Workshop

06 **Floorplan** Conference Set Up A

07 **Floorplan** Conference Set Up B

08 **Floorplan** Event

09 **Floorplan** Pop-Up Store

10 **Window View/ Cut**

# Factsheet

More Info & Booking via:

[showroom@weareanice.com](mailto:showroom@weareanice.com)

+49 160 95587709



Check-In starts 30 minutes before rental period.  
Please make sure that you arrive on time.

Check-Out

Must be arranged with the day host on site.



[360° Virtual Tour >](#)

## Maximum capacity.

MEETING



8 PAX

WORKSHOP



12 PAX

CONFERENCE



25 PAX

EVENT



50 PAX

+ OUTDOOR



+50 PAX

## Specials.



60m<sup>2</sup> space  
with huge window



Bright & modern  
Interior Design



WIFI  
High-Speed



Privacy  
curtains in place



WC  
unisex



Barrier-free  
Groundfloor access



Climate  
Control

## Equipment.



Print & Scan  
≤ DIN A4



BOSE  
Soundsystem



4K HD  
Beamer



HDMI  
Accessible



APPLE  
TV



Standing  
Desk



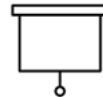
Writable  
Boards



6 sqm  
Pinwall



Workshop  
Material



4K Daylight  
Projection Screen



Professional Italian  
Coffeemachine



Moccamaster  
Coffeemachine



SMEG  
Fridge + Freezer



AARKE  
Carbonator

# Prices

## BASIC RENT

[8am - 6pm]

600.- EUR/day  
excl. VAT

## WEEKEND PASS

[Fr 8am - Sun 6pm]

1500.- EUR excl. VAT

## SPECIAL REQUIREMENT

[up to 1 week]

Price on request

## AFTER WORK PASS

+ [per hour/ from 6pm until 10pm]

100.- EUR excl. VAT

# Food & Drinks



### Drink & Snack Package (per person):

[Unlimited: Filtercoffee, Tea, Water, Softdrinks, Nuts, Fruits]

Half-Day: 12.- EUR excl. VAT

Full-Day: 24.- EUR excl. VAT



### Alcoholic Drinks (by consumption):

Beer [0,33l] 3.- EUR excl. VAT

Wine Bottle [0,75l] 15.- EUR excl. VAT



### Lunch Package

handmade by [NOSTIMO GREEK DELI](#)

11am - 3pm

14,90.- EUR excl. VAT

· [Fix Menu](#) + 3 daily changing lunch menu.

· We will inform you about the menu during the location check-in.



### Catering Package

handmade by [NOSTIMO GREEK DELI](#)

Menu on request (minimum 24hrs before)

250.- EUR excl. VAT

· Portions for 15 Pax

· Vegan, Vegetarian, Meet & Fish Options

· Served cold & warm - ready to eat

# Services



### Parking Lot

Secured Parking Area @Showroom

Per day: 15.- EUR excl. VAT



### Outdoor Area Registration (No Parking Zone)

Registration Service Fee:

100.- EUR excl. VAT

Minimum 14 days before!

Sign per day:

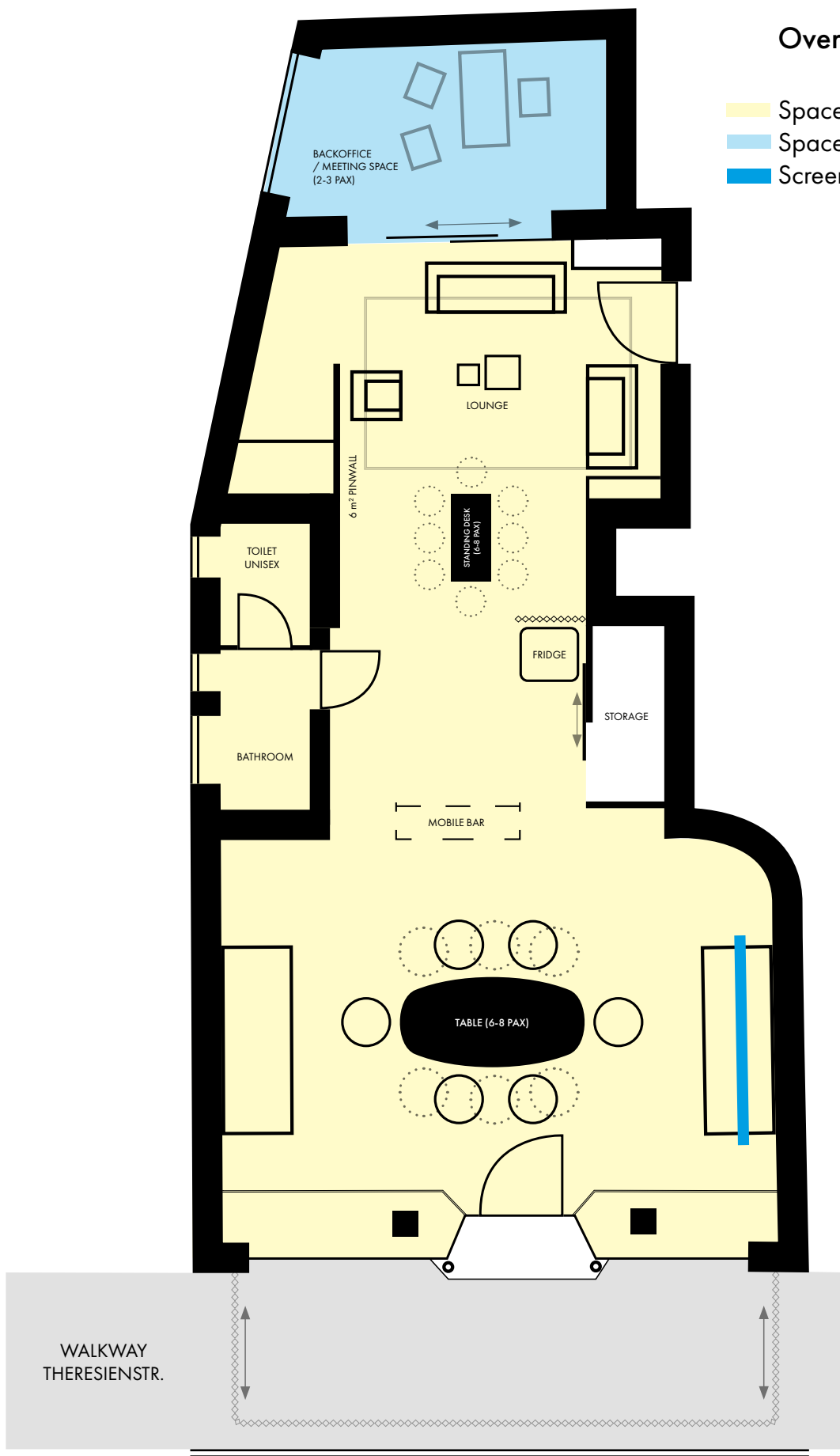
75.- EUR excl. VAT

+ every extra day: 10.- EUR excl. VAT

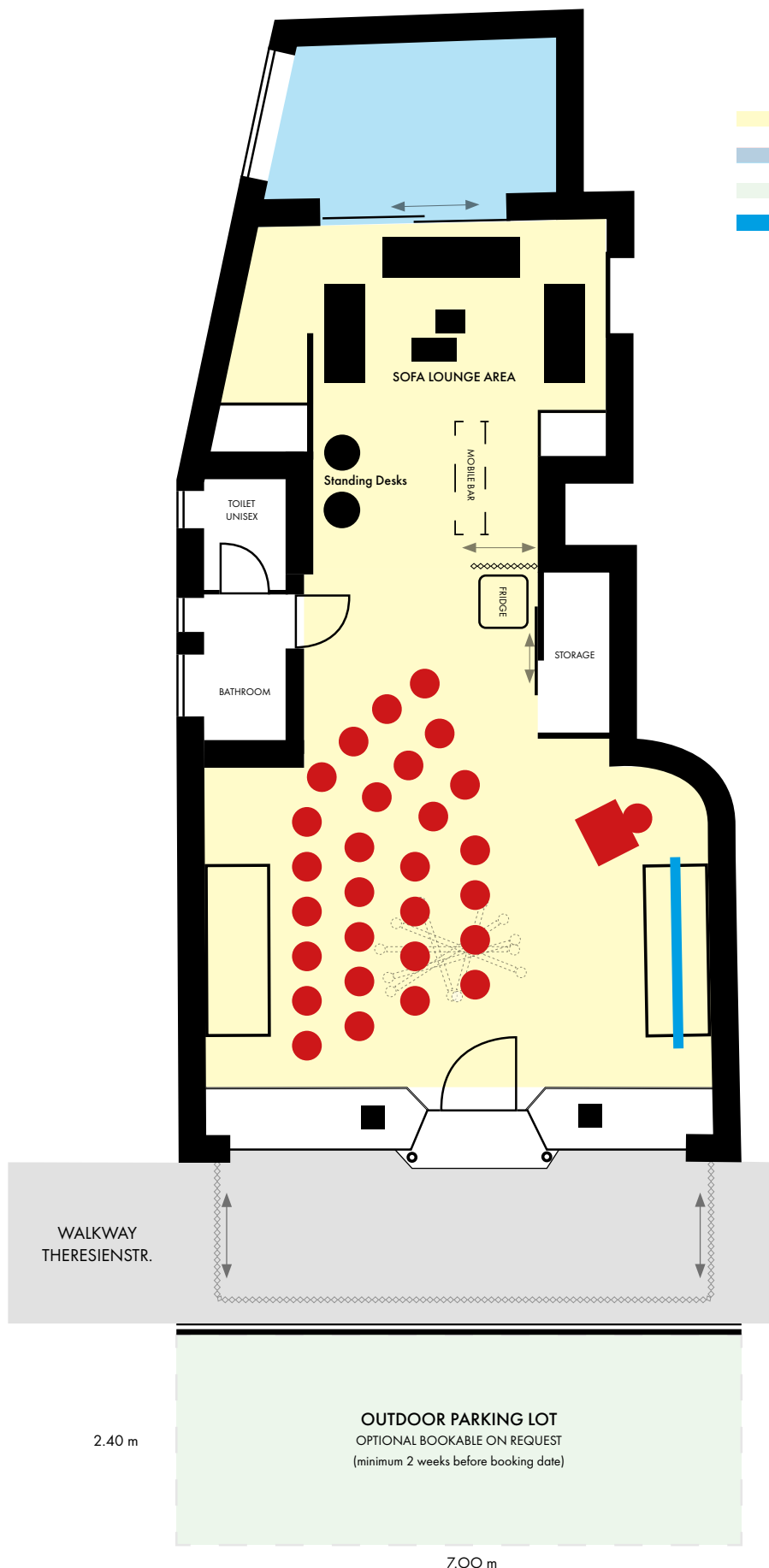
# Floorplan Workshop

## Overview:

- Space A - Showroom (49.3m<sup>2</sup>)
- Space C - Backoffice (8.60m<sup>2</sup>)
- Screen Wall (Beamer)



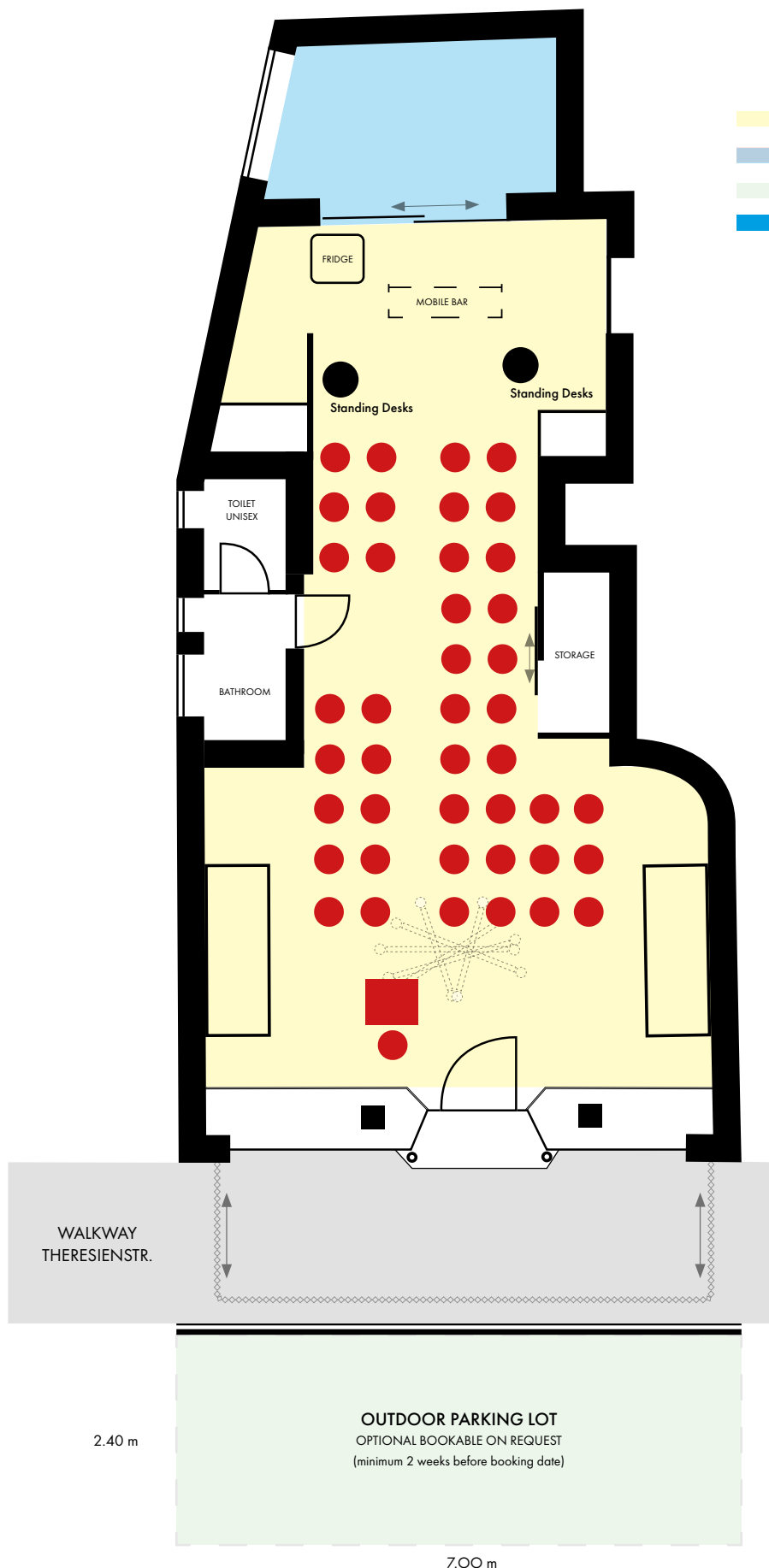
# Floorplan Conference Set Up A



## Overview:

- Space A - Showroom (33.3m<sup>2</sup>)
- Space C - Backoffice (8.60m<sup>2</sup>)
- Space D - Outdoor (16.80m<sup>2</sup>)
- Screen Wall (Beamer)

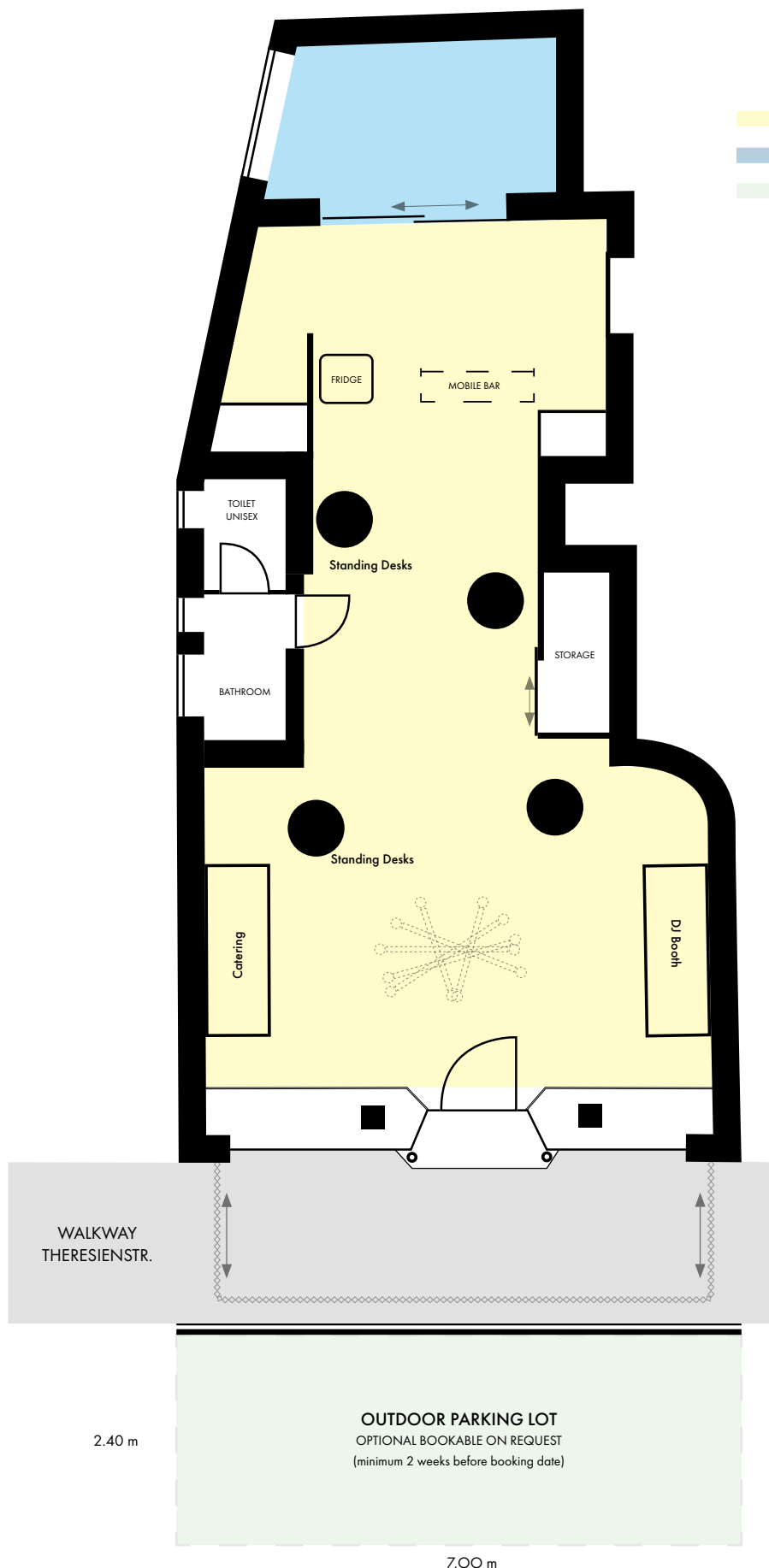
# Floorplan Conference Set Up B



## Overview:

- Space A - Showroom (33.3m<sup>2</sup>)
- Space C - Backoffice (8.60m<sup>2</sup>)
- Space D - Outdoor (16.80m<sup>2</sup>)
- Mobile TV Screen

# Floorplan Event



## Overview:

- Space A - Showroom (33.3m<sup>2</sup>)
- Space C - Backoffice (8.60m<sup>2</sup>)
- Space D - Outdoor (16.80m<sup>2</sup>)

WALKWAY  
THERESIENSTR.

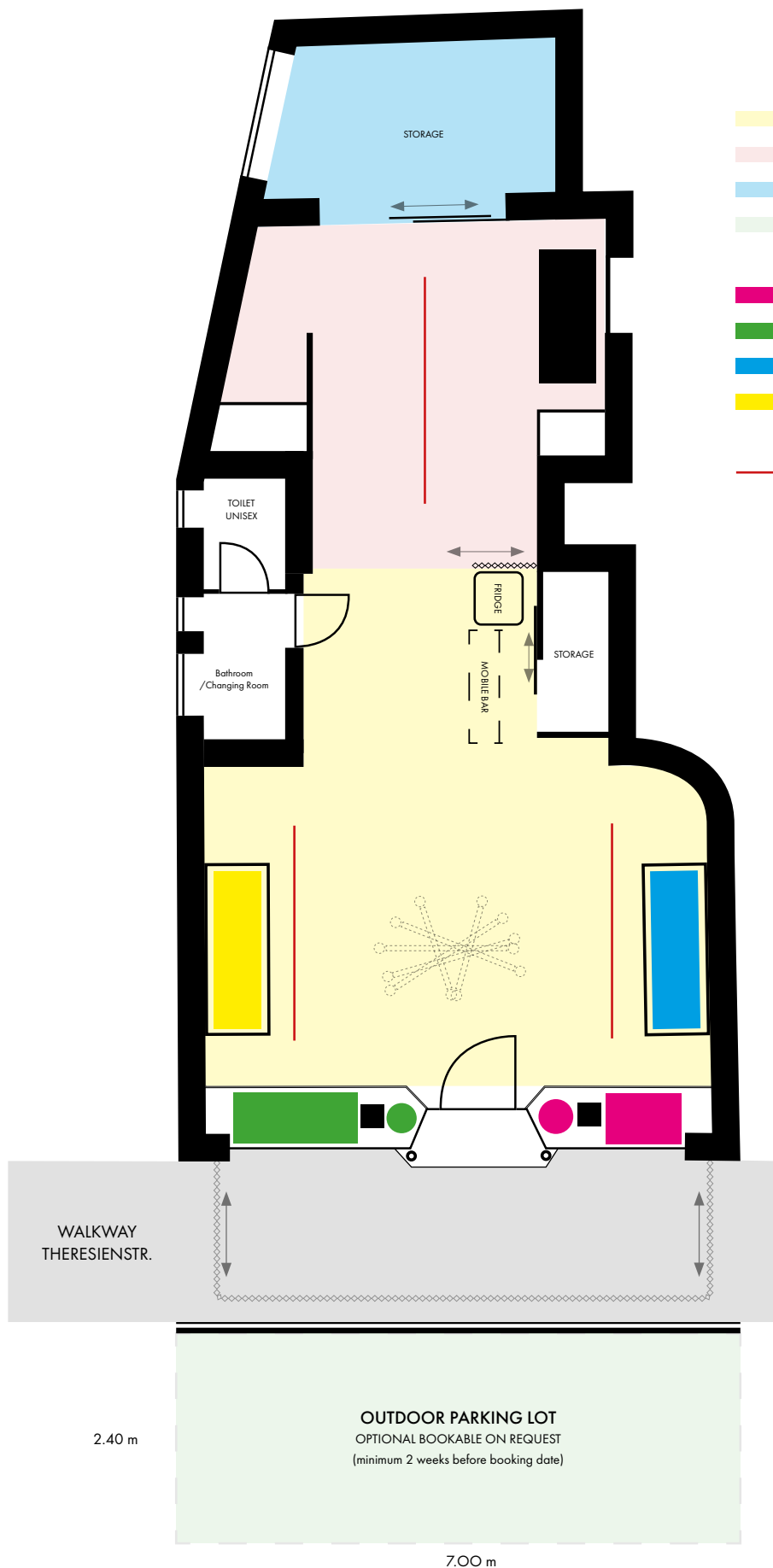
2.40 m

OUTDOOR PARKING LOT  
OPTIONAL BOOKABLE ON REQUEST  
(minimum 2 weeks before booking date)

7.00 m



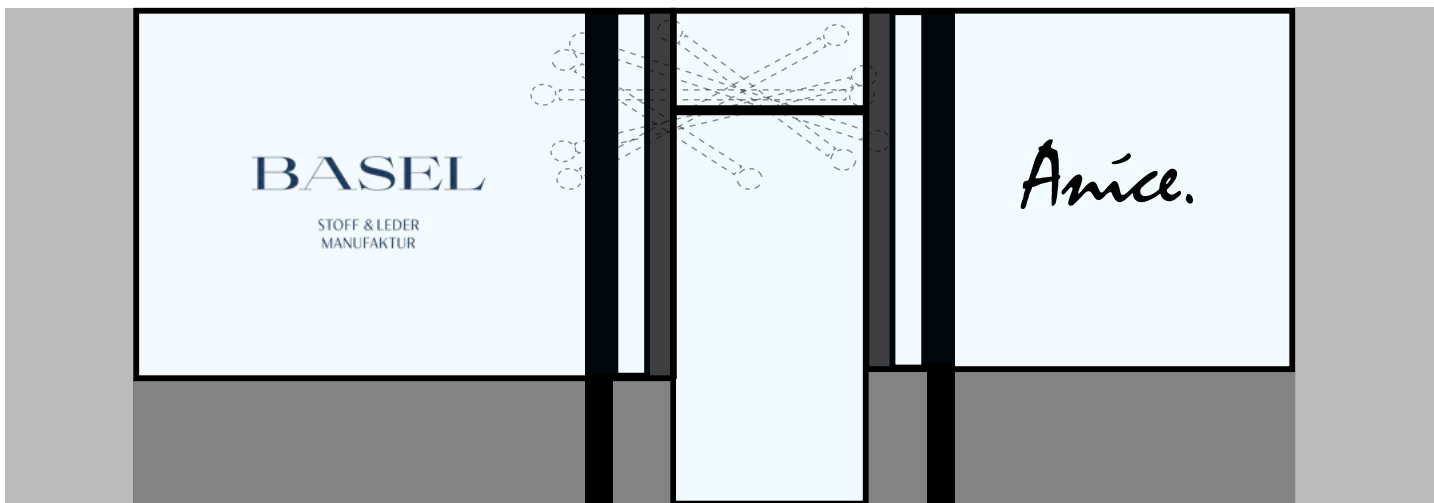
# Floorplan Pop-up Store



## Overview:

- Space A - Showroom (33.3m<sup>2</sup>)
- Space B - Office (16m<sup>2</sup>)
- Space C - Backoffice (8.60m<sup>2</sup>)
- Space D - Outdoor (16.80m<sup>2</sup>)
- Display Area - Window Right (1.2m<sup>2</sup>)
- Display Area - Window Left (1.8m<sup>2</sup>)
- Display Area - Sideboard A (1m<sup>2</sup>)
- Display Area - Sideboard B (1m<sup>2</sup>)
- Hanging Rod System (3x2m)

# Window View/Cut



## Window Printpreview (Maximum Measurements)

